

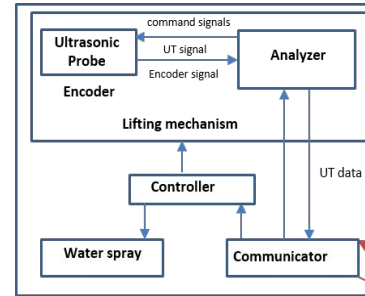
Ultrasonic Sensor Package Design

Ali Nokhbatolfoghahai | AIRTuB final event, 24 November 2022, Marknesse

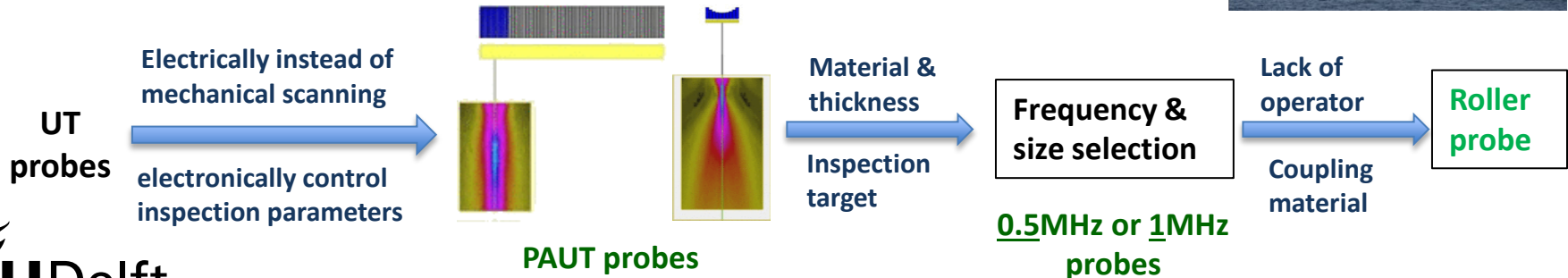
Hardware Selection and design based on requirements

Requirements

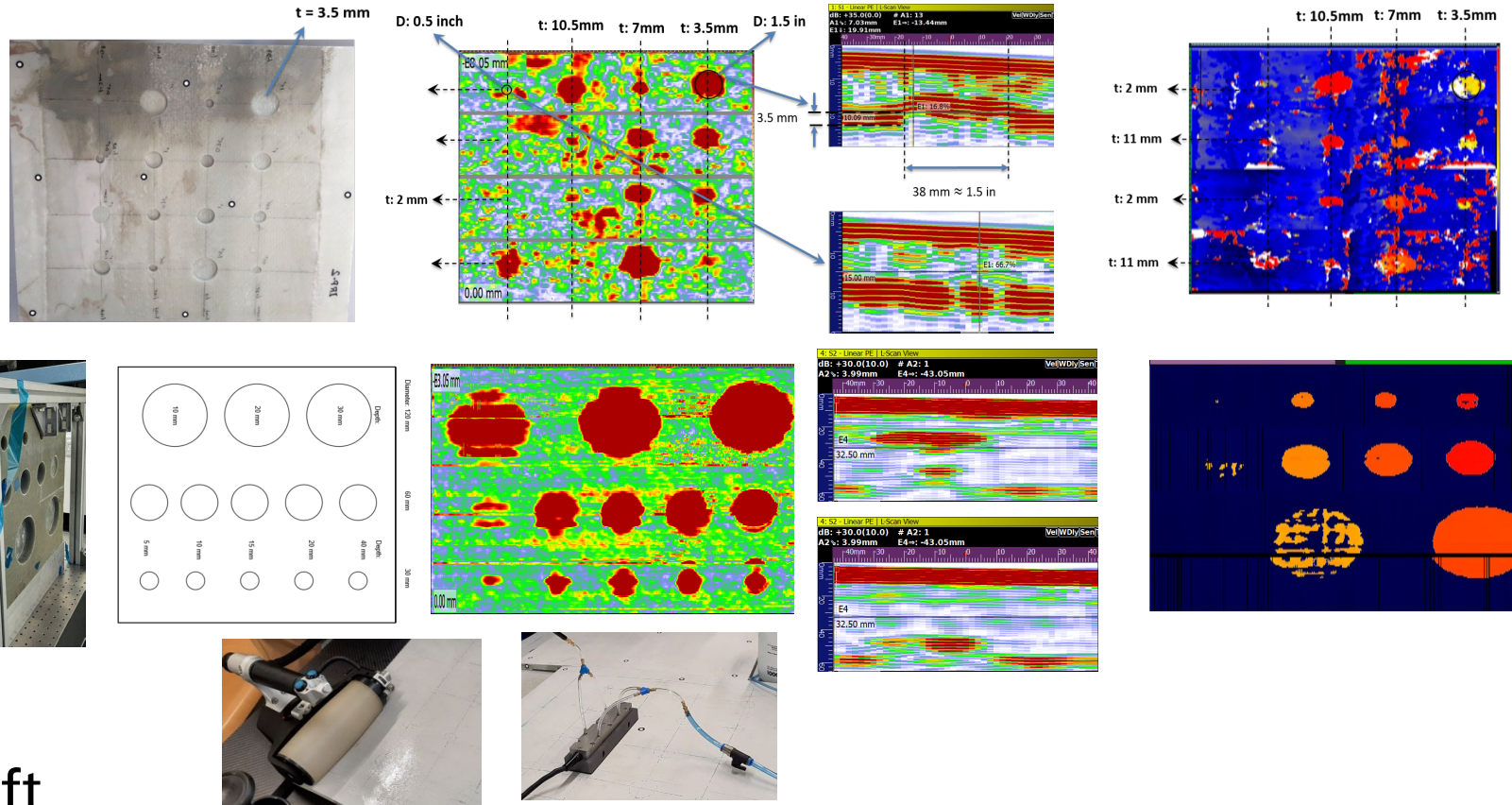
- Operate in offshore
- Be carried by drone and crawler
- Perform with remote control
- wide range of thickness 10-70 mm
- Inspect different kind of damages



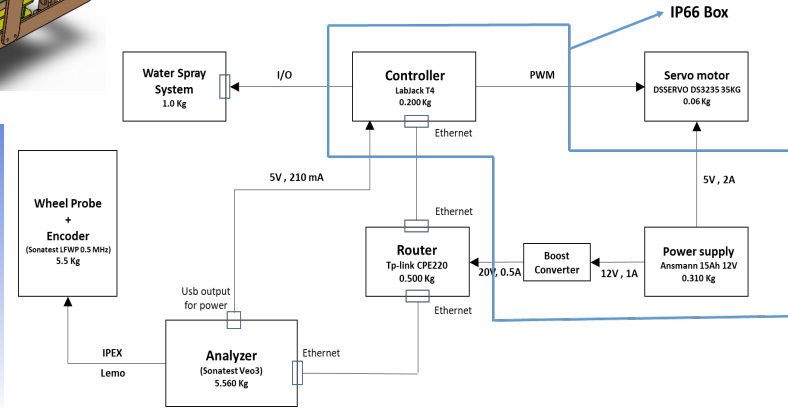
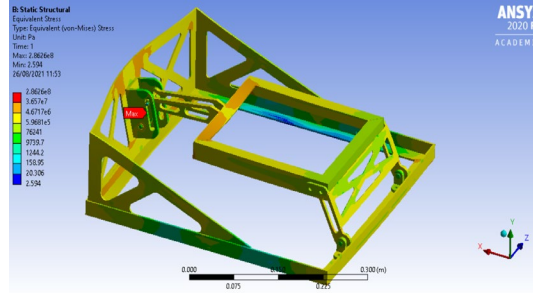
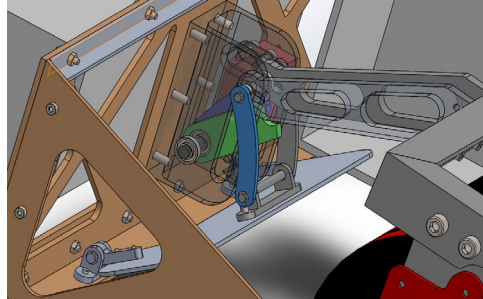
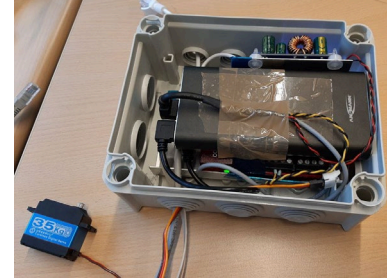
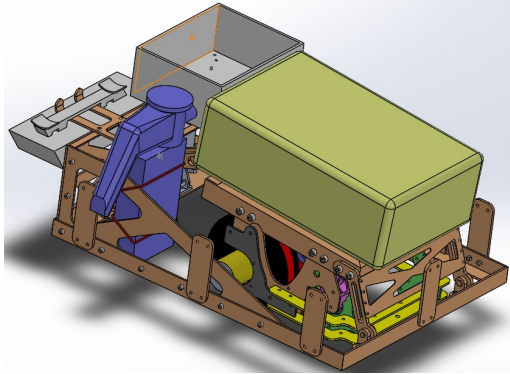
- Remote control of analyser
 - Command signal for controller
- Inspection data



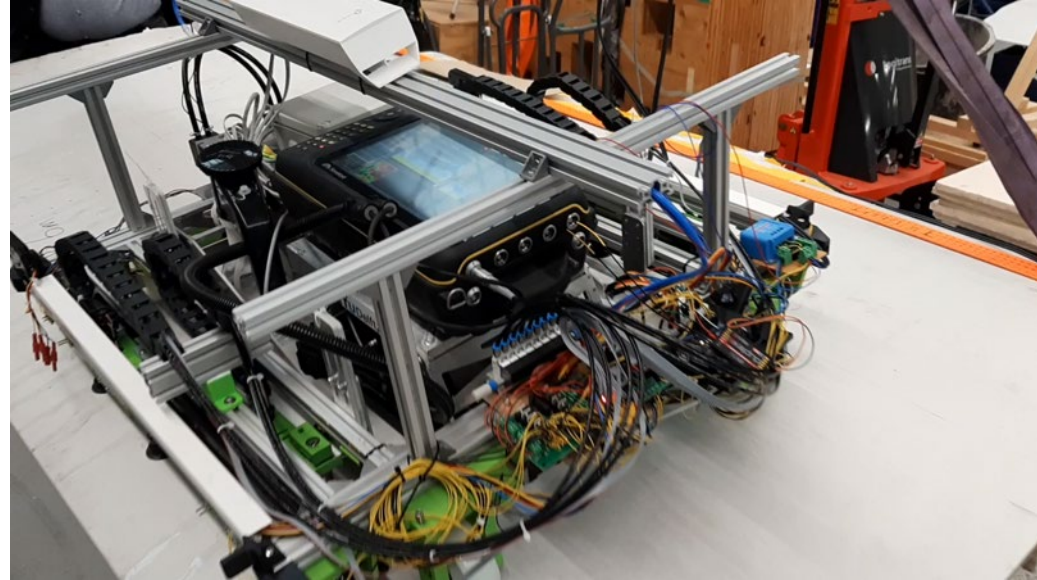
Hardware Selection and design based on requirements



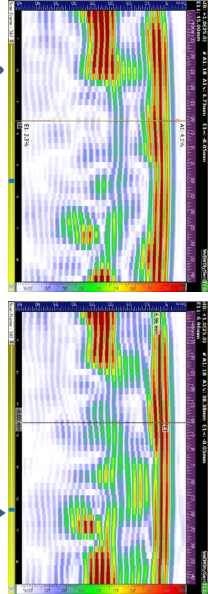
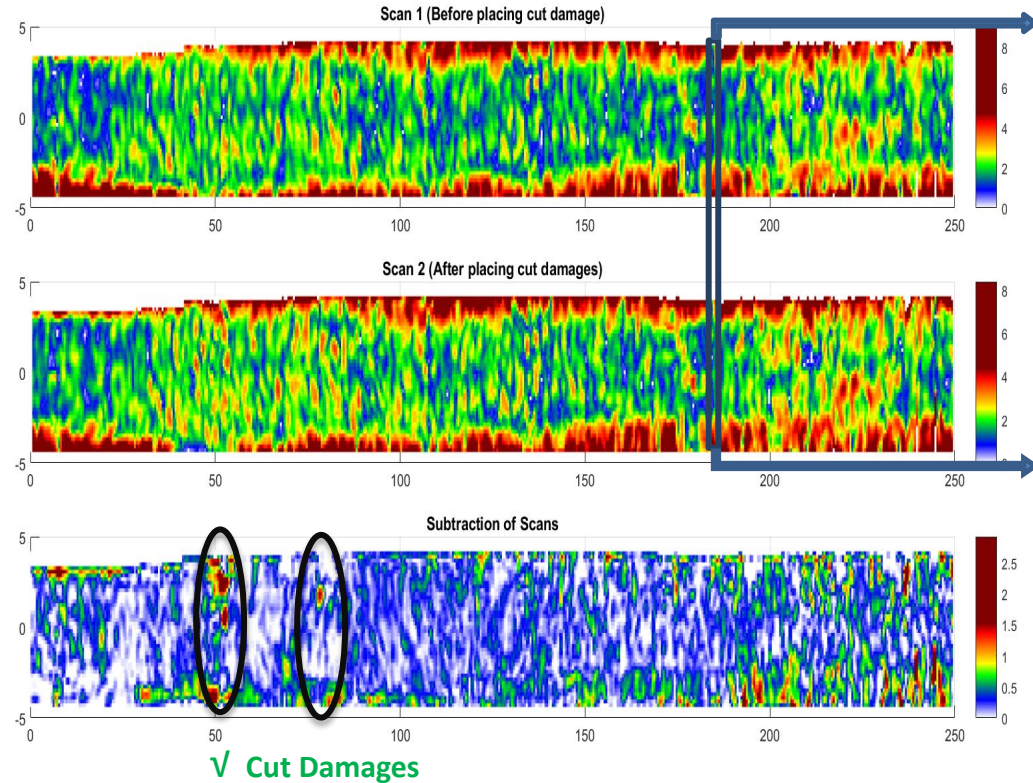
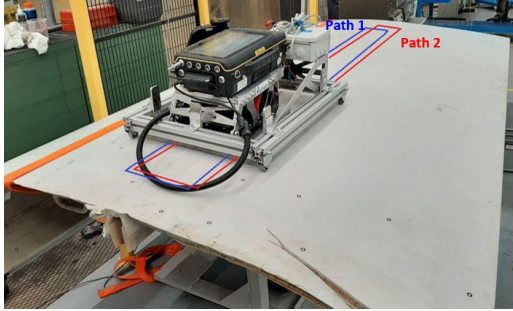
Hardware Selection and design based on requirements



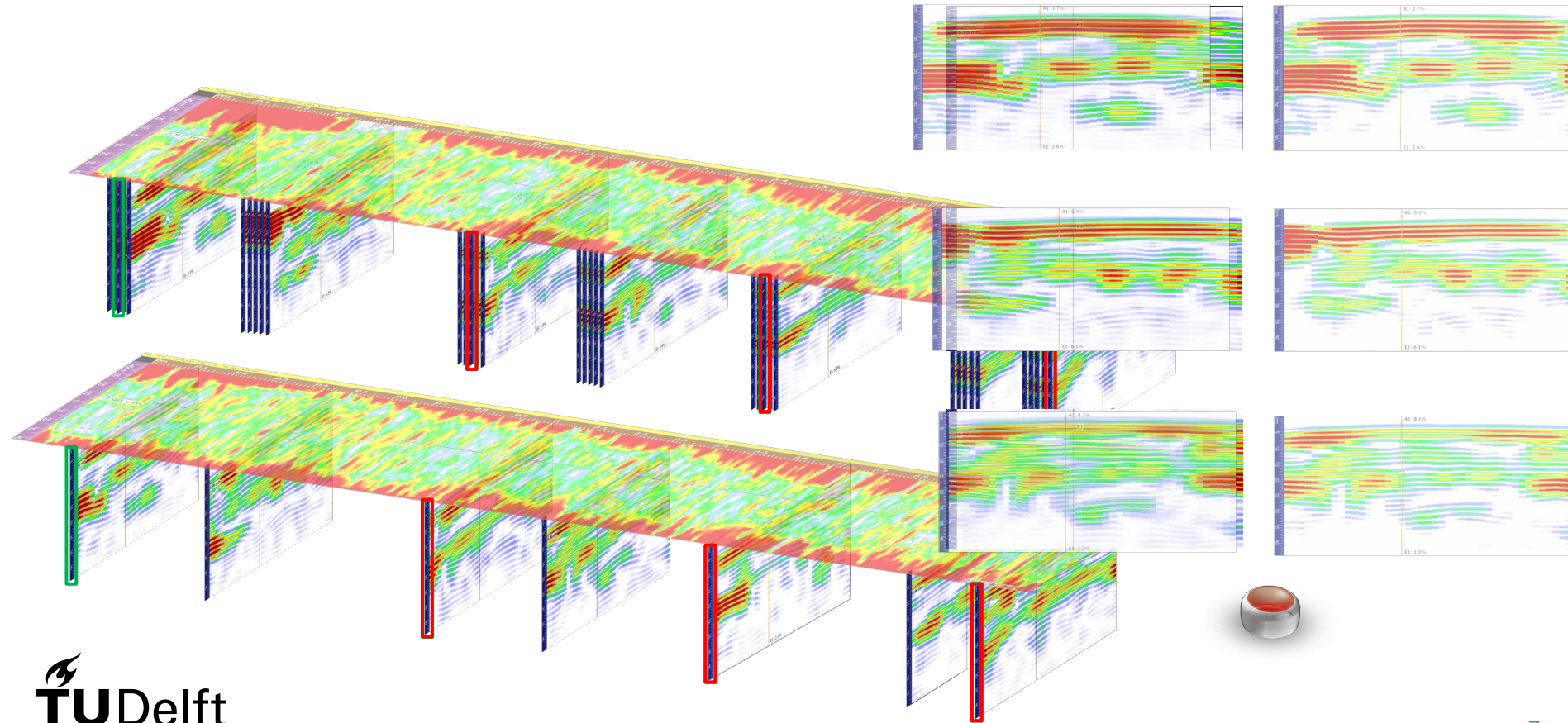
Hardware Selection and design based on requirements



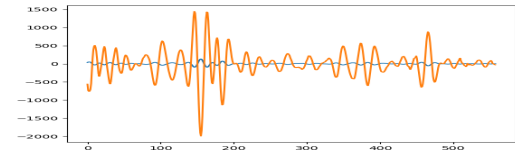
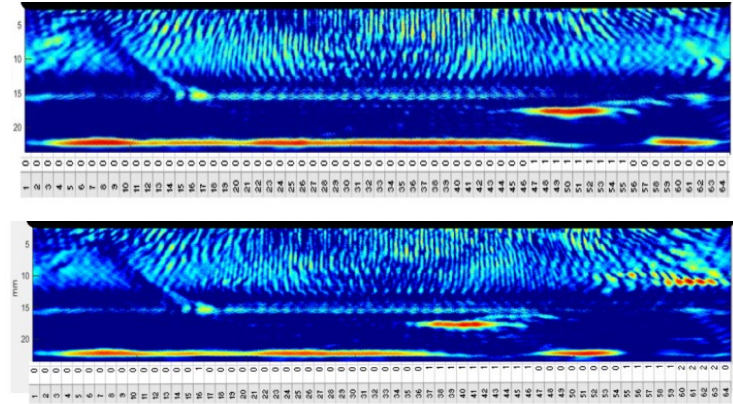
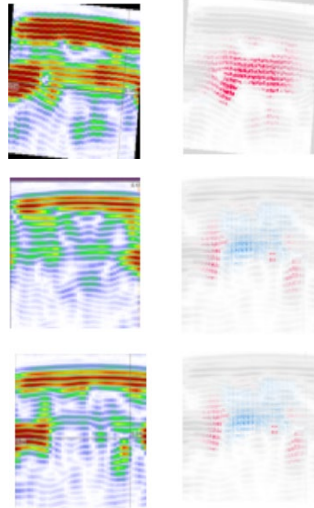
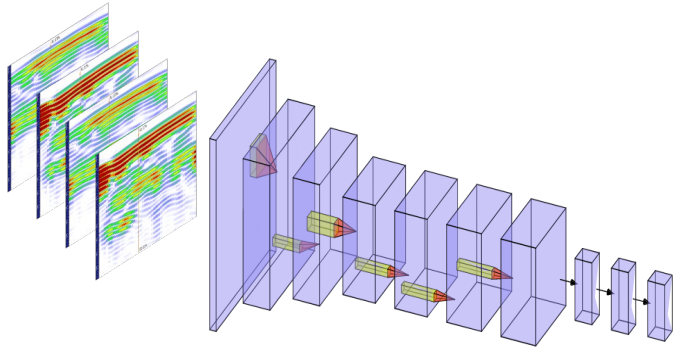
Evaluation and Data Processing – Data Fitting

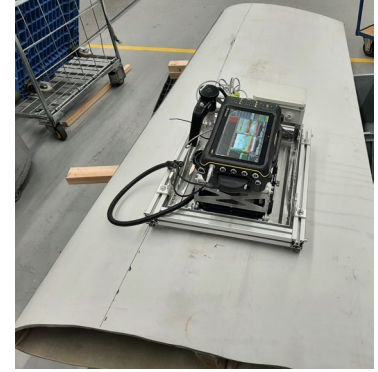
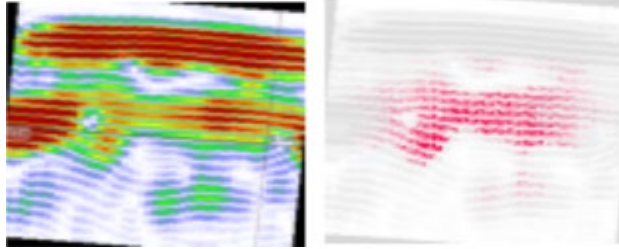


Evaluation and Data Processing – Data Fitting



Evaluation and Data Processing – AI Based



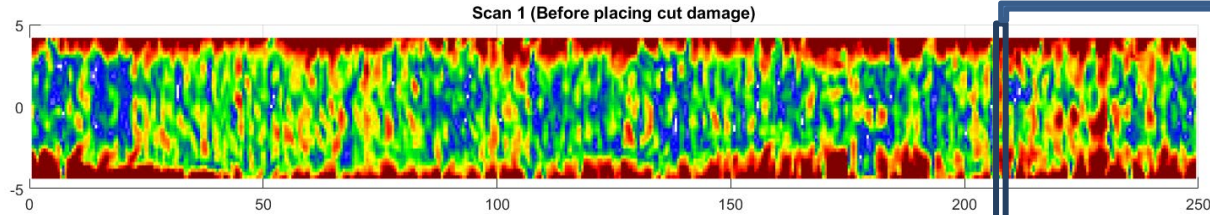


Ultrasonic Sensor Package Design

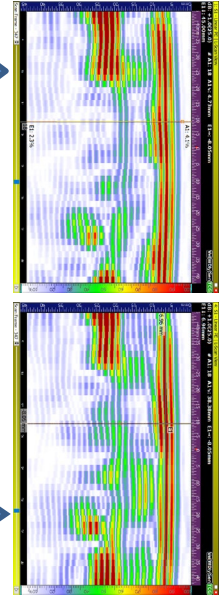
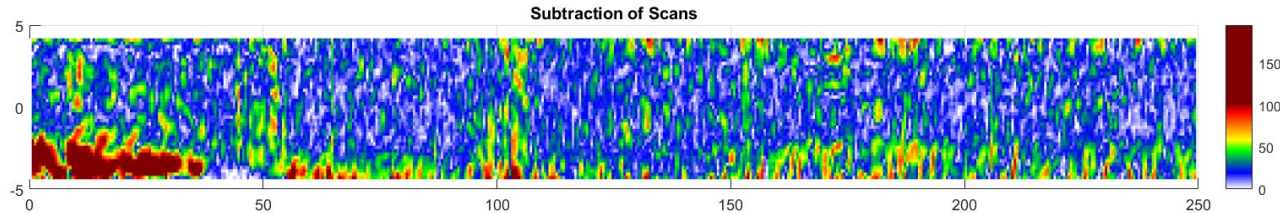
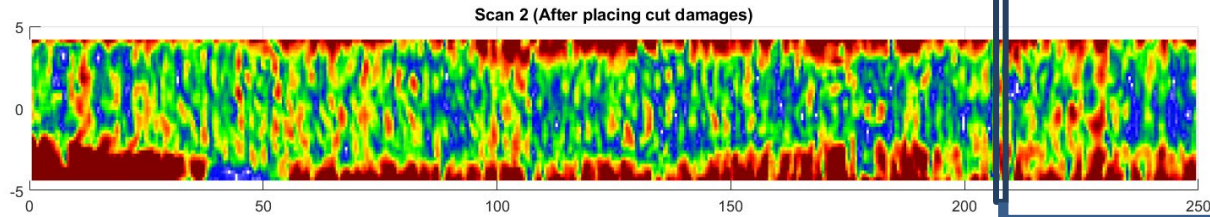
Ali Nokhbatolfoghahai | AIRTuB final event, 24 November 2022, Marknesse

Evaluation and Data Processing – Data Fitting

Scan 1
Before placing
Cut damage



Scan 2
After placing
Cut damages



Evaluation and Data Processing

