



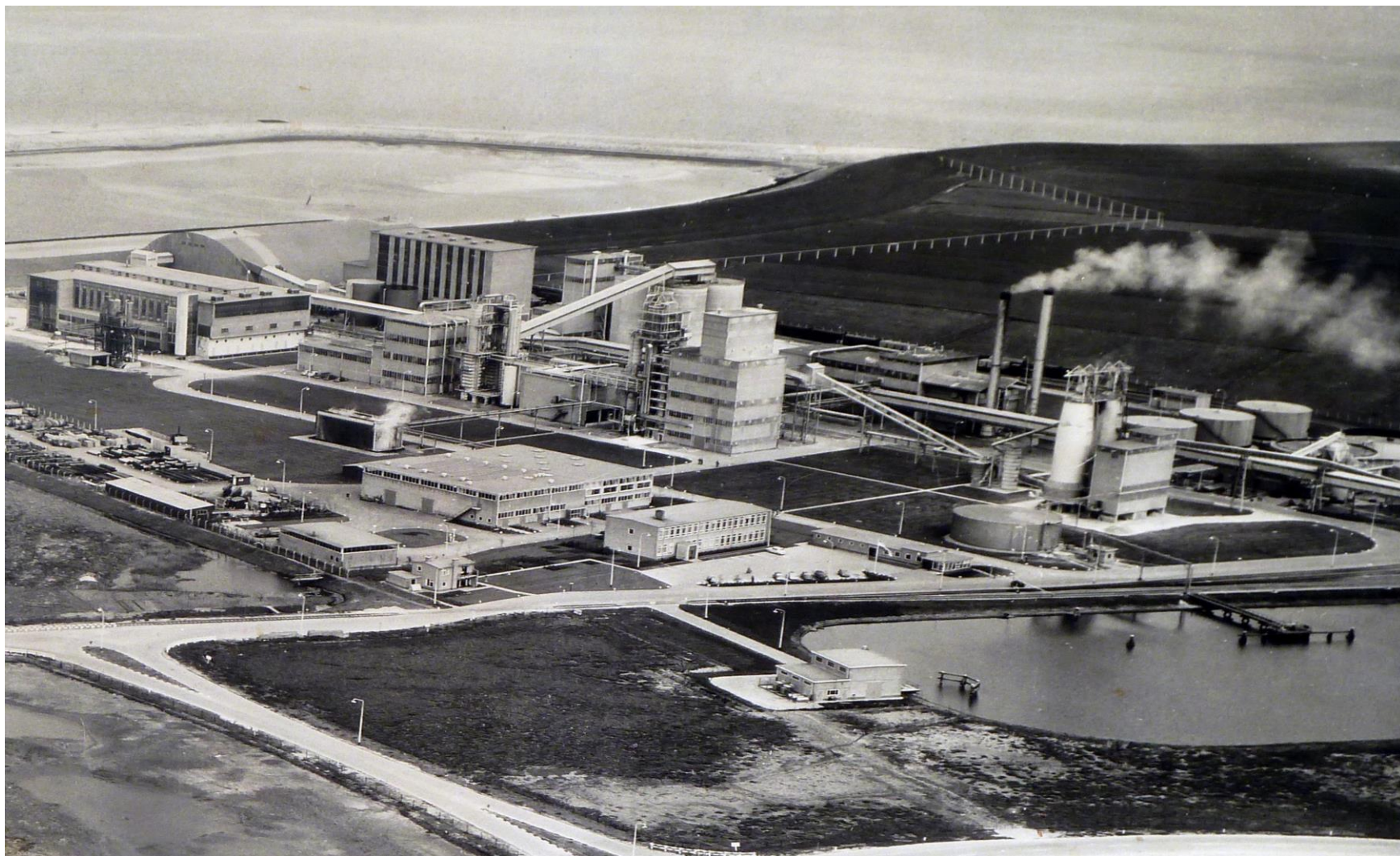
Welcome to Delamine!





Chemie Park Delfzijl (CPD)

'The early beginning'





... birds' eye view



NOBIAN

- Salt
- MEB
- Delesto

NOURYON

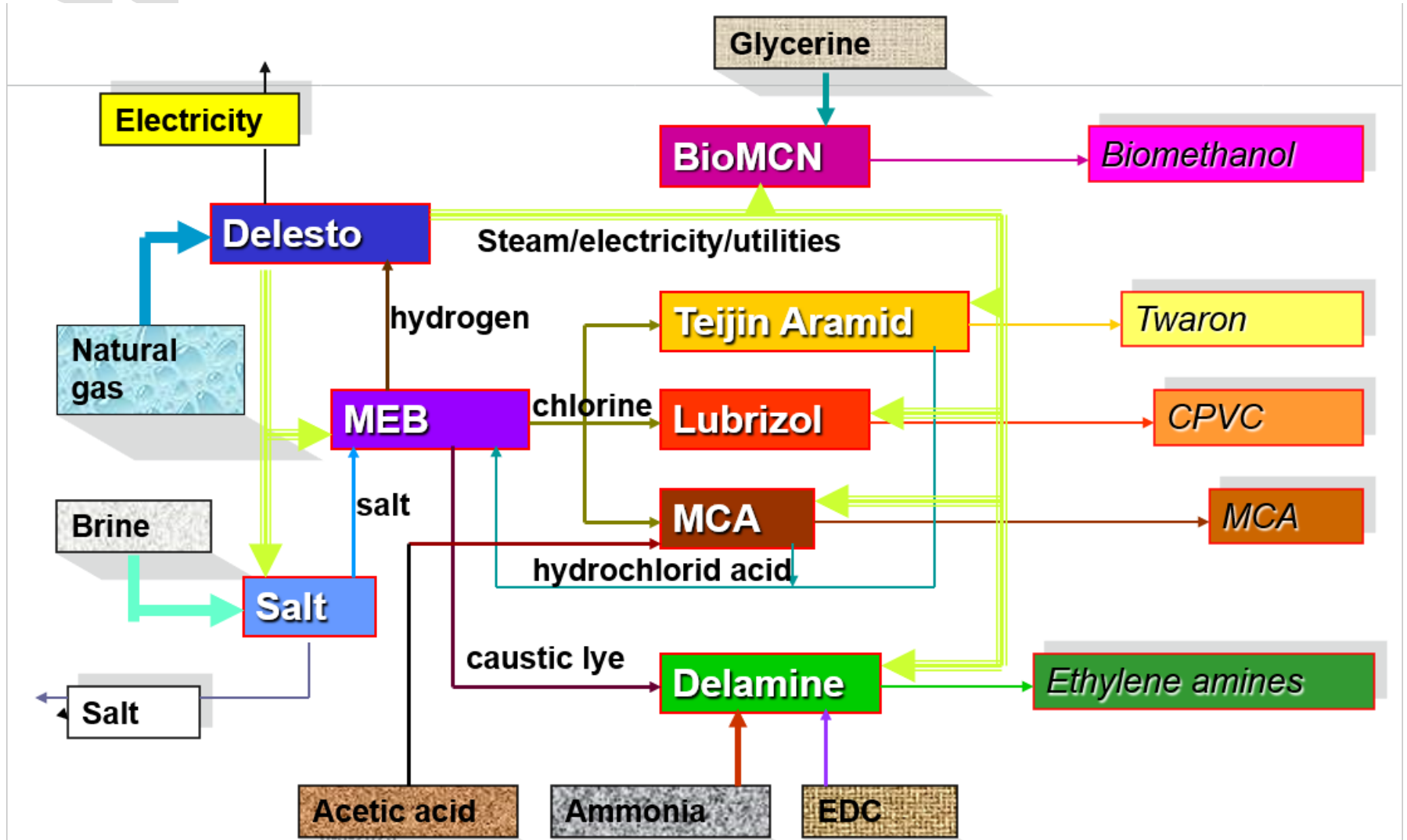
- MCA

- Delamine

- **BioMCN**
- **DGR**
- **Lubrizol**
- **Teijin Aramid**
- **Falck/Securitas**
- **JPB**
- **SGS**
- **Stork**



The CPD chain



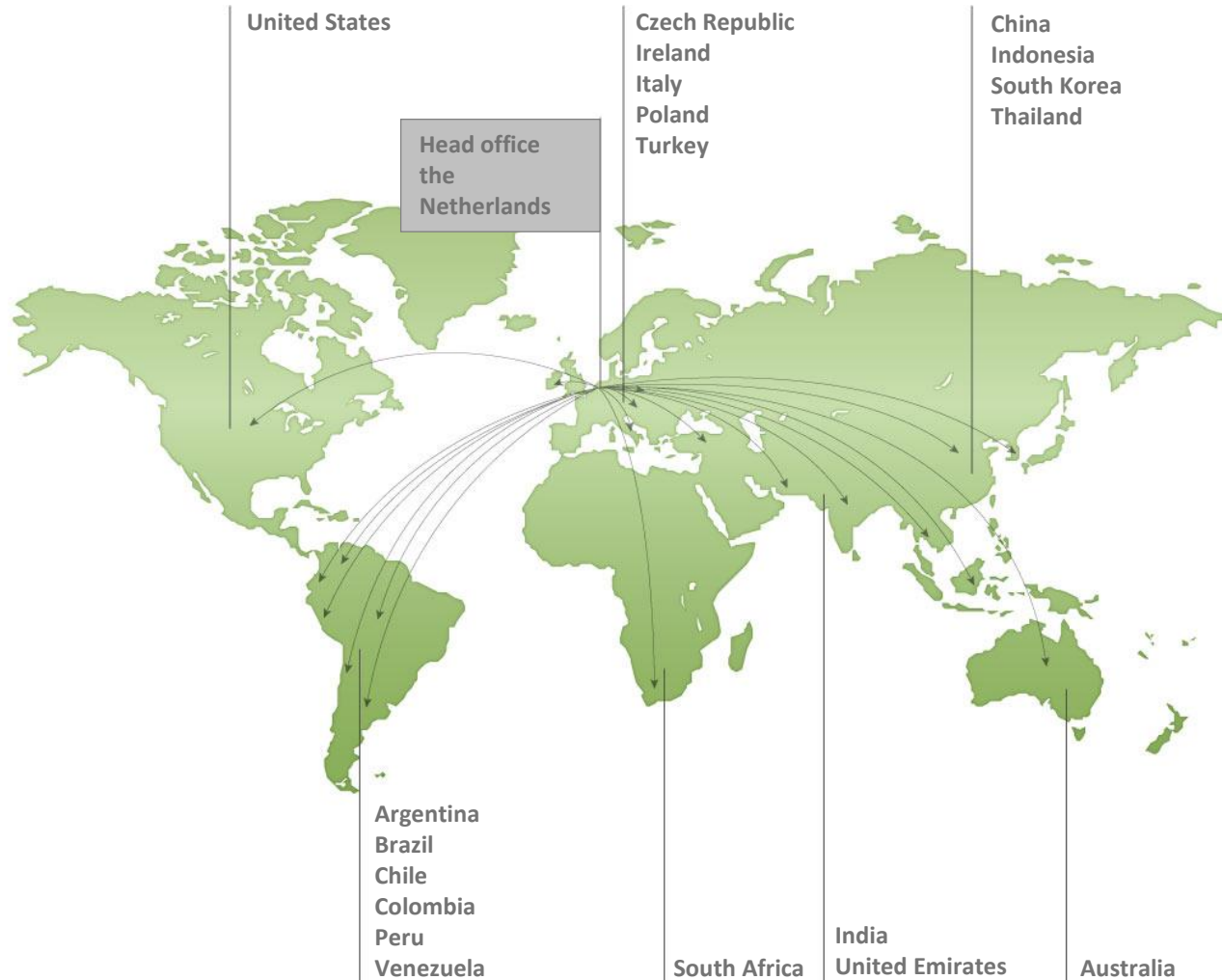


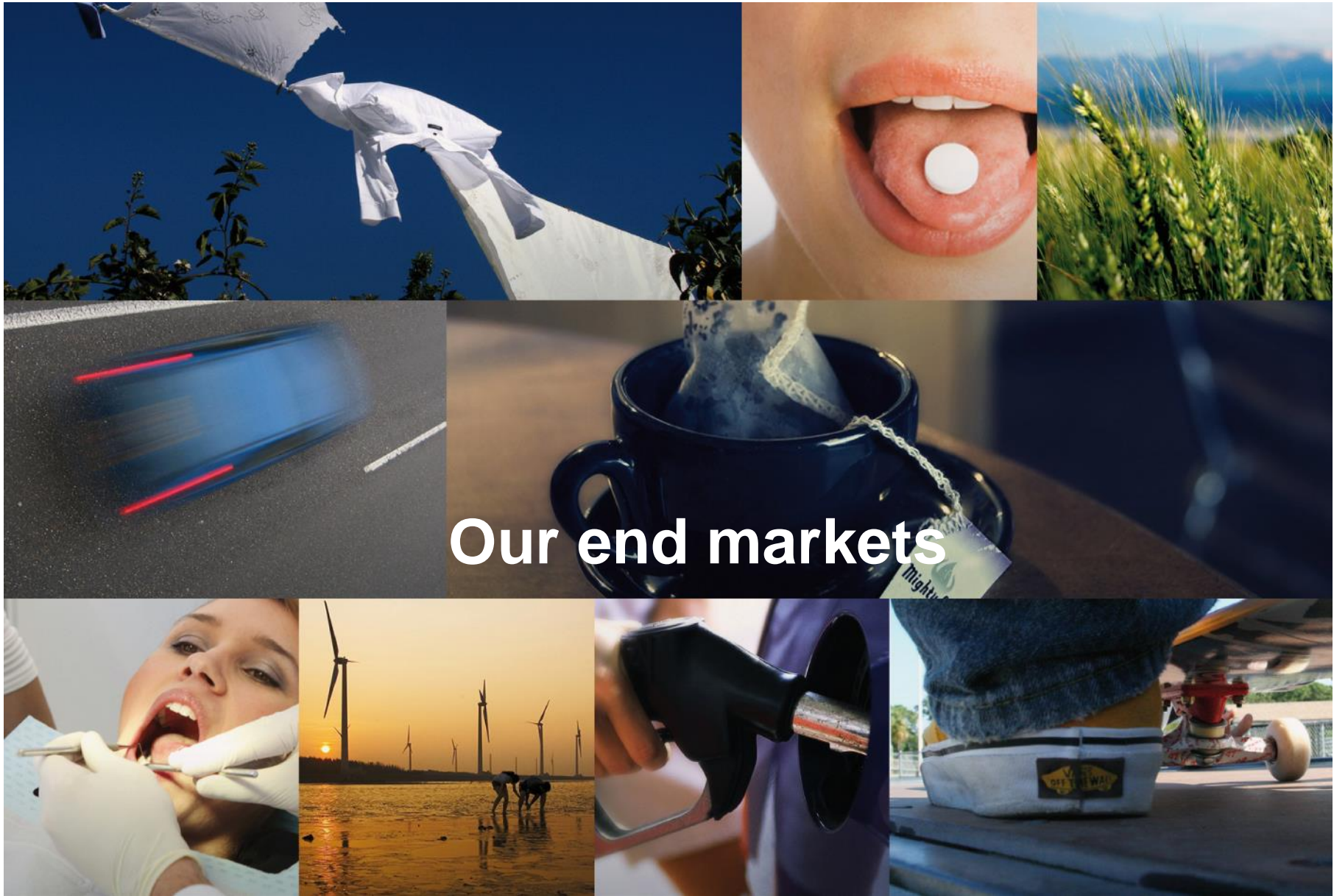
Our company

- founded in 1976; JV of Akzo & Tosoh Corporation
- an independent company with worldwide sales exceeding 100 million euro annually
- Sustainable and reliable producer for the full range of ethylene amines
- headquartered in Amersfoort, one manufacturing site
- Seveso facility
- ISO 9001/14001/45001 certified
- Name plate capacity 55 kT EA (EDC based)
- Approx. 120 employees



Our business and agencies



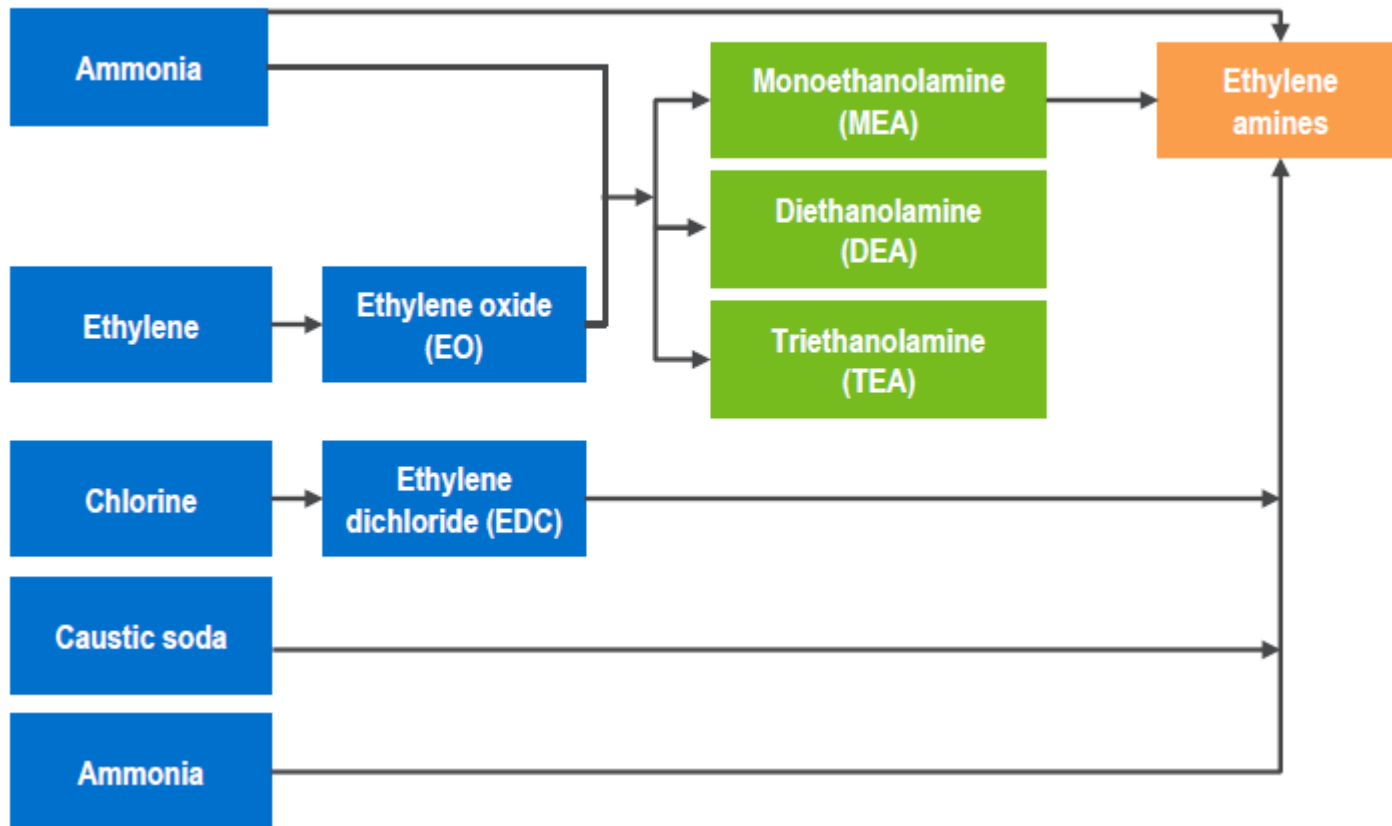


Our end markets



Commercial manufacturing routes

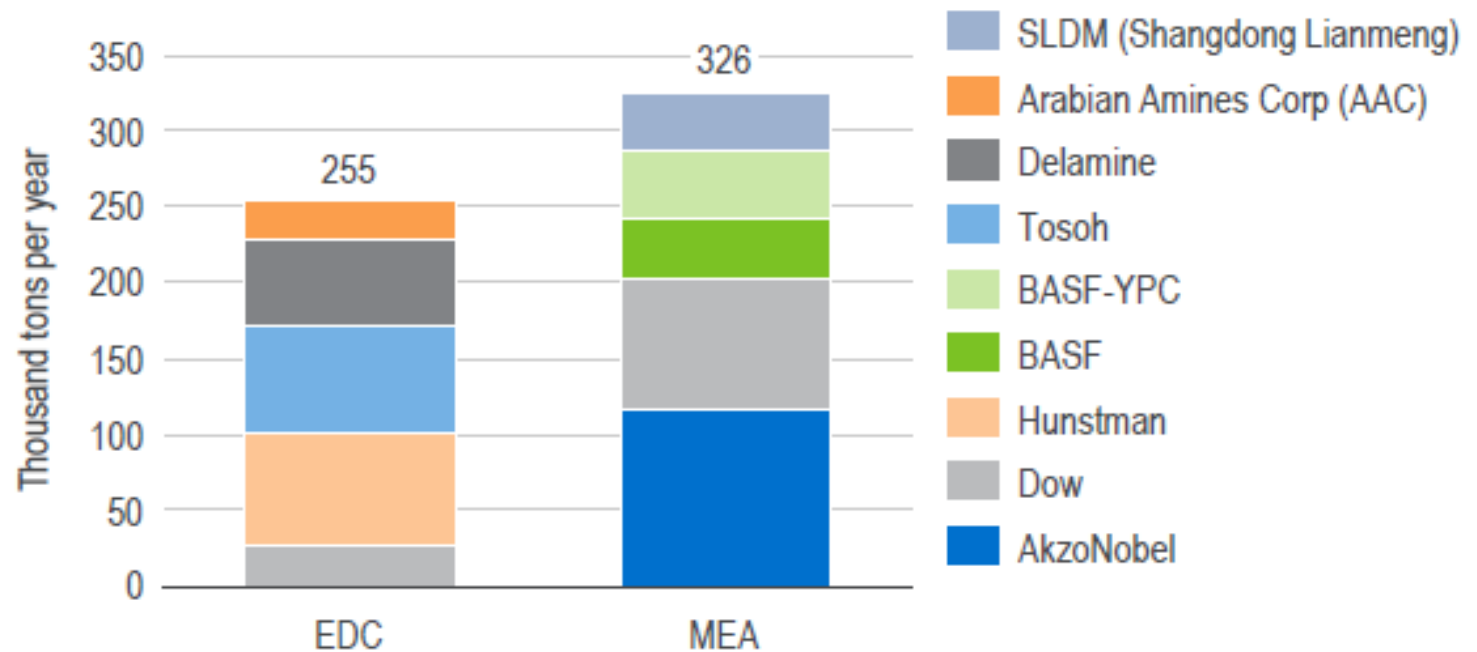
Ethylene amines value chain





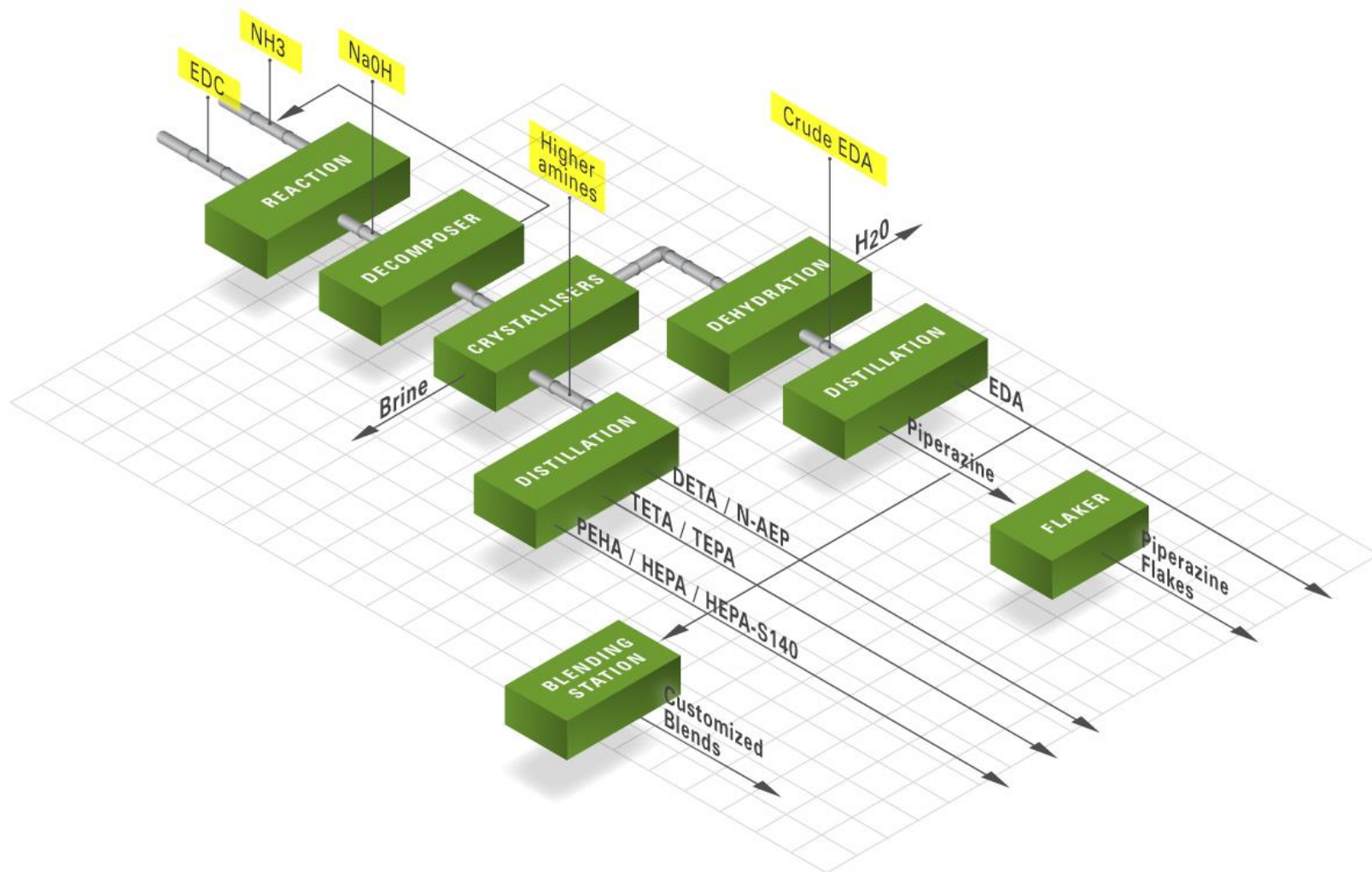
Competition

Global ethylene amine capacity by process
(2016)



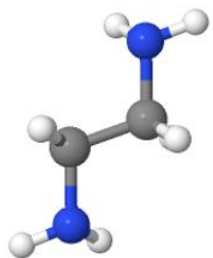


Production Process

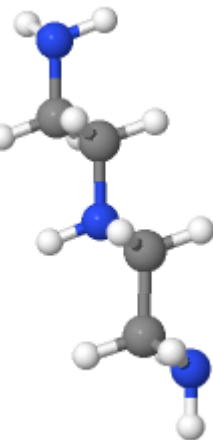




Products



EDA - ethylene di-amine



DETA - di-ethylene tri-amine

TETA - tri ethylene tetramine

TEPA - tetra ethylene pentamine

PEHA - penta ethylene hexamine

HEPA - higher ethylene polyamines

N-AEP - N-amino ethyl piperazine

PIP - Piperazine

HEPA S140

Mix



